



# One Million More Midwives

**14-18 JUNE  
2026  
LISBON**

34<sup>th</sup> ICM TRIENNIAL  
CONGRESS



[MIDWIVES2026.ORG](https://MIDWIVES2026.ORG)

## Sponsorship Brochure





## Important Dates

**Sun 14 June 2026**

Opening ceremony  
and exhibition opening

**Mon 15 – Wed 17 June 2026**

Sessions and exhibition

**Thu 18 June 2026**

Sessions, exhibition  
and closing ceremony



## Social Events

**Sat 13 June 2026**

One million more for Midwives' March

**Mon 15 June 2026**

Multifaith Celebration of Midwifery

**Tue 16 June 2026**

Congress dinner



## Deadlines

**3 March 2025**

Abstract Submission Opens

**25 June 2025**

Deadline for Submissions

**26 March 2025 – 3 March 2026**

Early bird Registration

**4 March 2026 – 26 May 2026**

Regular Registration rate

More Registration details

can be found on:

<https://www.midwives2026.org/registration-guidelines/>



## Service Contacts

**Sponsorship opportunities**

[s.pairman@internationalmidwives.org](mailto:s.pairman@internationalmidwives.org)

**Exhibition opportunities**

[lucie.senkova@c-in.eu](mailto:lucie.senkova@c-in.eu)

**Congress Secretariat  
(Registration)**

[registration@midwives2026.org](mailto:registration@midwives2026.org)

**Abstracts, programme details**

[abstracts@midwives2026.org](mailto:abstracts@midwives2026.org)

Partner sessions will be selected

and managed by ICM Head Office

[s.pairman@internationalmidwives.org](mailto:s.pairman@internationalmidwives.org)



## Statistics

**3,000**

attendees

**1,200**

abstracts

**600**

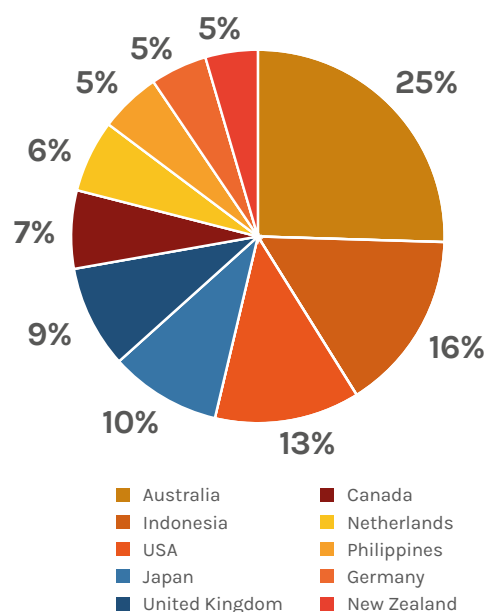
posters

**180**

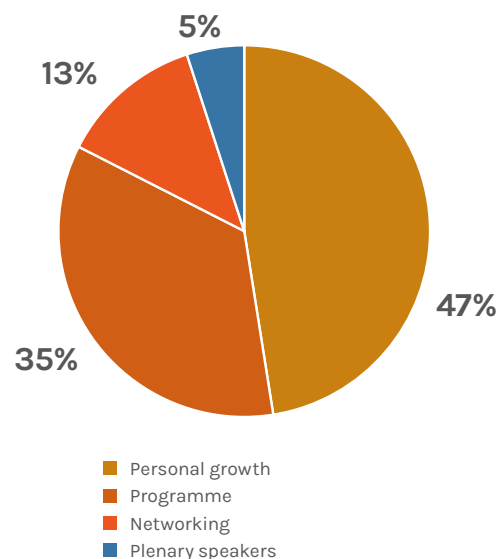
workshops  
& symposia



## Top 10 countries



## Why midwives attend





Prices are excluding VAT

# Partnership Packages

Item	Gold (€61,000) (Exclusive)	Silver (€45,000) (Exclusive)	Bronze (€35,000)	Friends (€11,500)
Entitled to host a lunch time satellite	✓	**	✗	✗
Entitled to host a breakfast satellite	✓	✓	✓	✗
Logo on delegate bag	✓	✗	✗	✗
Full congress registrations	8	6	4	2
Exhibition only registrations	8	6	4	2
Tickets to the Congress Dinner	8	6	4	2
Exhibition space (space only: no stand structure included)	36 sqm	18 sqm	9 sqm	6 sqm
Advert in conference programme	Full page	Half page	Half page	✗
Sponsorship profile in conference programme	100 words	100 words	100 words	100 words
General benefits *	✓	✓	✓	✓

\* All (Gold, Silver, Bronze and Friends) partners will receive these benefits:

- Company logo (hyperling included) on the congress website
- Logo on dedicated sponsor's acknowledgement banner
- Listed on congress mobile app
- Logo on ICM newsletter
- Right to use "Congress sponsor" on company collaterals
- Acknowledgement during the opening and closing ceremonies

\*\* It is possible to upgrade the package and purchase a lunchtime satellite (€5,000)



# Sponsorship Items

**All partners' logos will be displayed in the Final Programme, on the conference website with hyperlink, and on break slides.**

## Participant's Materials

Item:	Cost:	Description:
<b>Reusable Water Bottles (exclusive)</b>	<b>€7,000</b>	Partner's name and/or logo printed on bottle. Reusable water bottles will be distributed to all delegates upon Registration. Production and transportation cost borne by sponsor.
<b>Notepads &amp; pens (exclusive)</b>	<b>€10,000</b>	Partner's logo placed on the notepads and pens. Inserted in each delegate bag. Dual logo (ICM Congress logo and sponsor's logo) on pens and notepads. Production and transportation cost borne by sponsor.
<b>Water Stations (2 sponsors max.)</b>	<b>€5,000/ sponsor</b>	Partner's logo will be placed on dispensers. Partner can provide branded cups, etc.
<b>Branded hand sanitizer stations or Antibacterial hand gels/wipes (2 sponsors max.)</b>	<b>€5,000/ sponsor</b>	Partner's logo placed on the hand sanitizer stations or hand gels/wipes. Delegates provided in the congress bags. Production and transportation cost borne by sponsor.
<b>Charging station (exclusive)</b>	<b>€5,000</b>	Partner's logo will be placed on charging stations.

## Digital Sponsorship Opportunities

Item:	Cost:	Description:
<b>Mobile app (exclusive)</b>	<b>€15,000</b>	Partner's logo displayed on the homepage of the Mobile App The mobile app makes it easy for participants to access congress information and connect with speakers and colleagues. The app includes the scientific programme, abstracts, speaker info, participant lists, rating/voting system for sessions/ speakers and a personalised scheduler and is easily downloadable from the App Store and Google Play.



## Social and Networking Events

Prices are excluding VAT

Item:	Cost:	Description:
<b>Lunch break (2 sponsors max.)</b>	<b>€7,500/ sponsor</b>	Partner's logo displayed on the catering tables. Partner can distribute their own flags, napkins etc. or place roll-up banners. All branded materials must be approved by the organisers.
<b>Coffee break (2 sponsors max.)</b>	<b>€4,000/ sponsor</b>	Partner's logo displayed on the tables with coffee breaks. Partner can distribute their own flags, napkins etc. or place roll-up banners. All branded materials must be approved by the organisers.
<b>Welcome recep- tion (exclusive)</b>	<b>€10,000</b>	Exclusive branding opportunities, allowing your company to reach out to over 1,500 delegates. Partner can place roll-up banners and other branded materials (e.g. napkins etc.) at the Welcome Reception area. All branded materials must be approved by the organisers.
<b>March for one million more midwives (3 sponsors max.)</b>	<b>€15,000</b>	Create maximum visibility during this highly anticipated and enthusiastically attended ICM activity.

## Advertisement opportunities

Item:	Cost:	Description:
<b>Delegate's bag insert (5 sponsors max.)</b>	<b>€2,000/ sponsor</b>	Production and transportation cost borne by sponsor. Please note that ICM logo and possibly logo of Premium sponsor may be featured as well.
<b>Programme book advert-outside back cover (exclusive)</b>	<b>€3,500</b>	The dimensions will be specified.
<b>Programme book advert-inside front cover (exclusive)</b>	<b>€3,000</b>	The dimensions will be specified.
<b>Programme book advert-full page (5 sponsors max.)</b>	<b>€1,800/ sponsor</b>	The dimensions will be specified.



# Satellite Symposia

- Satellite Symposia are an opportunity for sponsors to host their own session at Congress, with slots available during lunch breaks or in mornings before the scientific programme begins each day.
- Sponsors of satellite sessions will be listed in the congress programme.
- The satellite programme details will be posted on the congress website, and will be included in the programme book and on the congress mobile app. (\*)
- Included: room rental/standard audio-visual equipment/1 display table outside the room.
- Not included: speakers registrations, catering and interpretation services can be booked separately.

(\*) Programme content to be approved by the organiser.  
Please note that other congress scientific educational programmes may take place at the same time.

Lunchtime session Mon/Tue/Wed/Thu 12:50–13:50		Morning pre-conference session Tue/Wed/Thu 8:00–8:45	
Up to 80 persons	€4,000	Up to 80 persons	€3,000
Up to 200 persons	€7,000	Up to 200 persons	€5,000
Up to 280 persons	€10,000		





# Partner Session

**ICM partners may apply for a designated partner session within the concurrent sessions of the scientific programme. There are 12 sessions available and ICM will review all applications before confirming so as to ensure a spread between partners and topics. Partners may be limited in the number of sessions each can have.**

- Partner sessions will be listed in the congress programme and included in the concurrent sessions.
- Abstracts will be required as part of the selection process. Please see separate Call for Abstracts for guidance on preparing request. Selection of partner sessions will be completed by September 2025. Early contact with ICM would be appreciated.
- Included: room rental/standard audio-visual equipment; interpretation services for sessions in Plenary Hall.
- Partner sessions will be selected and managed by ICM Head Office.
- All partners must register for the Congress.
- Please contact ICM Congress Coordination Consultant: [s.pairman@internationalmidwives.org](mailto:s.pairman@internationalmidwives.org).

Place	Price	Limitation
Plenary Hall – up to 1,500 persons and including interpretation into French, Spanish & English	€ 15,000 per sessions	Maximum 4 sessions
TBD -up to 390 persons, no interpretation	€ 10,000 per session	Maximum 4 sessions
TBD -up to 150 persons, no interpretation	€ 7,000 per session	Maximum 4 sessions





# ICM Practice Village:

## an opportunity for education

NEW

**Seize this unique opportunity to save your spot in the ICM Practice Village where you provide hands-on workshops with your company equipment. Midwives will have the opportunity to participate in a hands-on workshop in the exhibition area and receive training on the equipment. ICM Practice Village is available only as an upgrade to title partners (Premium, Gold, Silver, Bronze) or exhibitors.**

### Price €400/sqm

Please indicate the raw space necessary for each station – including sufficient room for visitors to move around.

### Training Village Station Includes:

- Company listing on the ICM congress website
- Company profile in the final programme and in the Conference app.
- 2 Complimentary exhibitor badges (per station)
- Welcome Reception entry
- Coffee and lunch breaks
- Standard chairs and tables per sqm

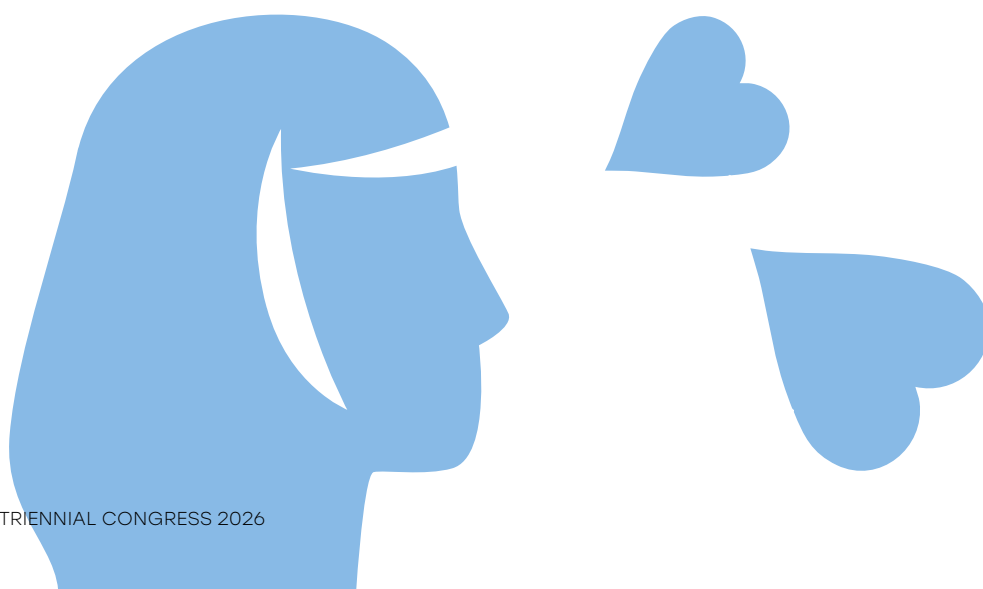
**Please Note:** AV equipment (including TV screens, sound systems, etc.) is not included and must be ordered separately. Each 6 sqm station will be provided with one table and four chairs only.

The exact scheduling of activities will be coordinated with ICM SPPC based on the final congress program. Depending on demand, dedicated time slots for the Training Village may be allocated; otherwise, activities can take place during coffee breaks and lunch periods.

Each Practice station is organised by the company, which brings the medical equipment and training staff. Free to Congress participants, the schedule, pre-booking and Practice session will be directly managed by the company.

Should you wish to move forward, we kindly ask you to fill in the form which will be submitted to the SPPC for review. We require a description of the Practice station and learning objectives. Deadline September 2025.

Kindly note that this is an educational activity and not a DEMONSTRATION OF COMMERCIAL PRODUCT.







# Exhibition Opportunities

**The limited exhibit spaces offer an opportunity for your company to communicate with participants. Exhibition booths will be arranged to maximise delegate flow with close proximity to food and beverage service areas. All exhibitors will be listed in the programme and on the conference website.**

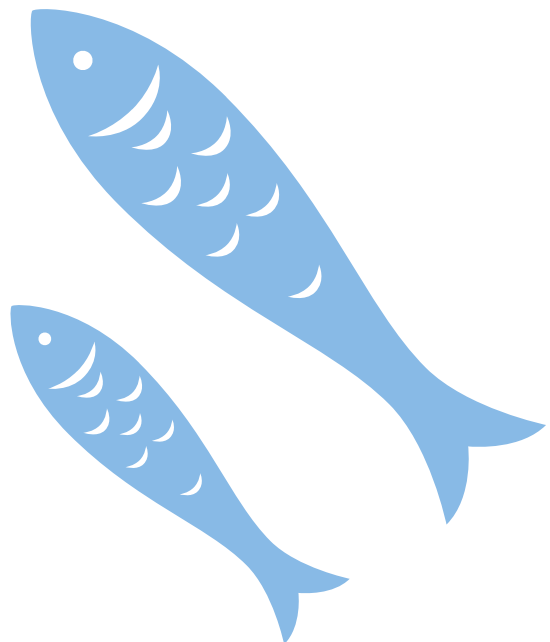
Stand size	Cost (space only)
Single inline space only (3 × 3 m <sup>2</sup> / 10' × 10')	€4,500
Single corner space only (3 × 3 m <sup>2</sup> / 10' × 10')	€5,000
Double inline space only (3 × 6 m <sup>2</sup> / 10' × 20')	€8,000
Double corner space only (3 × 6 m <sup>2</sup> / 10' × 20')	€9,000

Shell schemes (*)	Cost
Single inline shell scheme package	€5,400
Single corner shell scheme package	€5,900

(\*) Larger shell scheme stands can be accommodated on request.

## A standard shell scheme booth (per 9 sqm / 10' × 10' space) includes:

- Set-up and dismantling
- Modular wall booth structure
- 1 company fascia board (name only, no logos)
- Electricity
- 1 table and 2 chairs
- 1 garbage bin
- Carpet
- Access to the Welcome reception
- 2 exhibitor only registrations per 9 sq m / 10' × 10' booth space





Light box stand package (*)	Cost
Single Light box stand package	TBD

(\*) Larger light box stands  
can be accommodated on request.

**A Light box stand  
(per 9 sqm /10' × 10' booth space) includes:**

- Set-up and dismantling
- Light box stand with own graphic
- Electricity
- 1 table and 2 chairs
- 1 garbage bin
- Carpet
- Locable counter with own graphic/logo
- Access to the Welcome reception
- 2 exhibitor only registrations per 9 sqm /10' × 10' booth space

Prices are excluding VAT

