



# One Million More Midwives

**14-18 JUNE  
2026  
LISBON**

34<sup>th</sup> ICM TRIENNIAL  
CONGRESS



[MIDWIVES2026.ORG](https://MIDWIVES2026.ORG)

## Sponsorship Brochure





## Important Dates

**Sun 14 June 2026**

Opening ceremony  
and exhibition opening

**Mon 15 – Wed 17 June 2026**

Sessions and exhibition

**Thu 18 June 2026**

Sessions, exhibition  
and closing ceremony



## Social Events

**Sat 13 June 2026**

One million more for Midwives' March

**Mon 15 June 2026**

Multifaith Celebration of Midwifery

**Tue 16 June 2026**

Congress dinner



## Deadlines

**3 March 2025**

Abstract Submission Opens

**25 June 2025**

Deadline for Submissions

**26 March 2025 – 3 March 2026**

Early bird Registration

**4 March 2026 – 26 May 2026**

Regular Registration rate

More Registration details

can be found on:

<https://www.midwives2026.org/registration-guidelines/>



## Service Contacts

**Sponsorship opportunities**

[s.pairman@internationalmidwives.org](mailto:s.pairman@internationalmidwives.org)

**Exhibition opportunities**

[odile.poulain@c-in.eu](mailto:odile.poulain@c-in.eu)

**Congress Secretariat  
(Registration)**

[registration@midwives2026.org](mailto:registration@midwives2026.org)

**Abstracts, programme details**

[abstracts@midwives2026.org](mailto:abstracts@midwives2026.org)

Partner sessions will be selected

and managed by ICM Head Office

[s.pairman@internationalmidwives.org](mailto:s.pairman@internationalmidwives.org)



## Venue

CCL—Lisbon Congresss Centre



## Statistics

**3,000**

attendees

**1,200**

abstracts

**600**

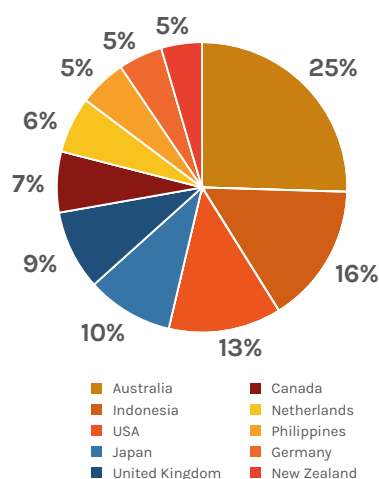
posters

**180**

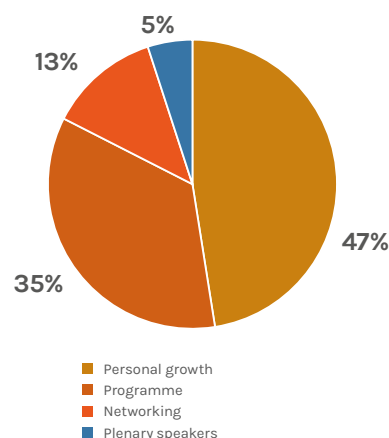
workshops  
& symposia



## Top 10 countries



## Why midwives attend





# Partnership Packages

Prices are excluding VAT

Item	Gold SOLD OUT (€61,000)	Silver SOLD OUT (€45,000)	Bronze (€35,000)	Friends (€11,500)
Entitled to host a lunchtime satellite	✓	**	✗	✗
Entitled to host a breakfast satellite	✓	✓	✓	✗
Logo on delegate bag	✓	✗	✗	✗
Full congress registrations	8	6	4	2
Exhibition only registrations	8	6	4	2
Tickets to the Congress Dinner	8	6	4	2
Exhibition space (space only: no stand structure included)	36 sqm	18 sqm	9 sqm	6 sqm
Advert in conference programme	Full page	Half page	Half page	✗
Sponsorship profile in conference programme	100 words	100 words	100 words	100 words
General benefits *	✓	✓	✓	✓

\* All (Gold, Silver, Bronze and Friends) partners will receive these benefits:

- Company logo (hyperlink included) on the congress website
- Logo on dedicated sponsor's acknowledgement banner
- Listed on congress mobile app
- Logo on ICM newsletter
- Right to use "Congress sponsor" on company collaterals
- Acknowledgement during the opening and closing ceremonies

\*\* It is possible to upgrade the package and purchase a lunchtime satellite (€5,000)



# Sponsorship Items

**All partners' logos will be displayed in the Final Programme, on the conference website with hyperlink, and on break slides.**

## Participant's Materials

Item:	Cost:	Description:
<b>Reusable Water Bottles (exclusive)</b>	<b>€7,000</b>	Partner's name and/or logo printed on bottle. Reusable water bottles will be distributed to all delegates upon Registration. Production and transportation cost borne by sponsor.
<b>Notepads &amp; pens (exclusive)</b>	<b>€10,000</b>	Partner's logo placed on the notepads and pens. Inserted in each delegate bag. Production and transportation cost borne by sponsor.
<b>Water Stations (2 sponsors max.)</b>	<b>€5,000/ sponsor</b>	Partner's logo will be placed on dispensers. Partner can provide branded cups, etc.
<b>Branded hand sanitizer stations or Antibacterial hand gels/wipes (2 sponsors max.)</b>	<b>€5,000/ sponsor</b>	Partner's logo placed on the hand sanitizer stations or hand gels/wipes. Delegates provided in the congress bags. Production and transportation cost borne by sponsor.

## Digital Sponsorship Opportunities

Item:	Cost:	Description:
<b>Mobile app (exclusive)</b>	<b>€15,000</b>	Partner's logo displayed on the homepage of the Mobile App The mobile app makes it easy for participants to access congress information and connect with speakers and colleagues. The app includes the scientific programme, abstracts, speaker info, participant lists, rating/voting system for sessions/ speakers and a personalised scheduler and is easily downloadable from the App Store and Google Play.



**NEW**

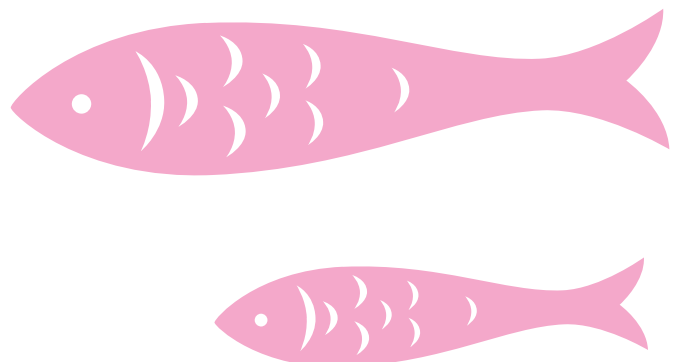
## AI Translation Sponsorship

Support **innovation and inclusivity** at **ICM 2026** by sponsoring the **AI Translation System**, a browser-based app that provides live transcription and translation in participants' preferred languages. Attendees can follow sessions directly on their devices with **AI-powered interpretation**, while our **Charging & Power Bank Zone** ensures they stay connected and comfortable, offering device charging, headphone borrowing, and power bank rentals throughout the day.

As a **sponsor**, you'll receive:

- prominent branding on specific devices in the charging area,
- the option to include promotional materials or QR codes,
- and recognition on the conference website and program.

Item:	Cost:	Description:
<b>Power Bank Sponsorship (exclusive)</b>	<b>€6,000</b>	As part of our sustainability and accessibility efforts, participants can borrow branded power banks free for 24 hours to stay powered while using the AI Translation app. Sponsor this initiative to keep your brand visible on every power bank and at the venue's charging stations.
<b>Earphone Sponsorship (2 sponsors max.)</b>	<b>€3,000/ sponsor</b>	Ensure every delegate enjoys the congress by sponsoring complimentary branded earphones for use with AI Translation or live streaming, giving your brand high visibility and direct engagement throughout the event.
<b>Charging station Sponsorship (3 sponsors max.)</b>	<b>€5,000/ sponsor</b>	With the current growing reliance on electrical devices, your company can provide delegates with a power source for their various devices during the Congress. Charging stations will be placed in the charging zone and are branded with the sponsor's logo.





## Social and Networking Events

Prices are excluding VAT

Item:	Cost:	Description:
<b>Lunch break (2 sponsors max.)</b>	<b>€7,500/ sponsor</b>	Partner's logo displayed on the catering tables. Partner can distribute their own flags, napkins etc. or place roll-up banners. All branded materials must be approved by the organisers.
<b>Coffee break (2 sponsors max.)</b>	<b>€4,000/ sponsor</b>	Partner's logo displayed on the tables with coffee breaks. Partner can distribute their own flags, napkins etc. or place roll-up banners. All branded materials must be approved by the organisers.
<b>March for one million more midwives (3 sponsors max.)</b>	<b>€15,000</b>	Create maximum visibility during this highly anticipated and enthusiastically attended ICM activity.

## Advertisement opportunities

Item:	Cost:	Description:
<b>Delegate's bag insert (5 sponsors max.)</b>	<b>€2,000/ sponsor</b>	Production and transportation cost borne by sponsor. Please note that ICM logo and possibly logo of Premium sponsor may be featured as well.
<b>Programme book advert-outside back cover (exclusive)</b>	<b>€3,500 SOLD OUT</b>	The dimensions will be specified.
<b>Programme book advert-inside front cover (exclusive)</b>	<b>€3,000 SOLD OUT</b>	The dimensions will be specified.
<b>Programme book advert-full page (5 sponsors max.)</b>	<b>€1,800/ sponsor</b>	The dimensions will be specified.



# Satellite Symposia

- Satellite Symposia are an opportunity for sponsors to host their own session at Congress, with slots available during lunch breaks or in mornings before the scientific programme begins each day.
- Sponsors of satellite sessions will be listed in the congress programme.
- The satellite programme details will be posted on the congress website, and will be included in the programme book and on the congress mobile app.(\*)
- Included: room rental/standard audio-visual equipment/1 display table outside the room.
- Not included: speakers registrations, catering and interpretation services can be booked separately.

(\*) Programme content to be approved by the organiser.  
Please note that other congress scientific educational programmes may take place at the same time.

Lunchtime session <b>SOLD OUT</b> Mon/Tue/Wed/Thu 12:50–13:50		Morning pre-conference session Tue/Wed/Thu 8:00–8:45	
Up to 80 persons	€4,000	Up to 80 persons	€3,000
Up to 200 persons	€7,000	Up to 200 persons	€5,000
Up to 280 persons	€10,000		





# Partner Session

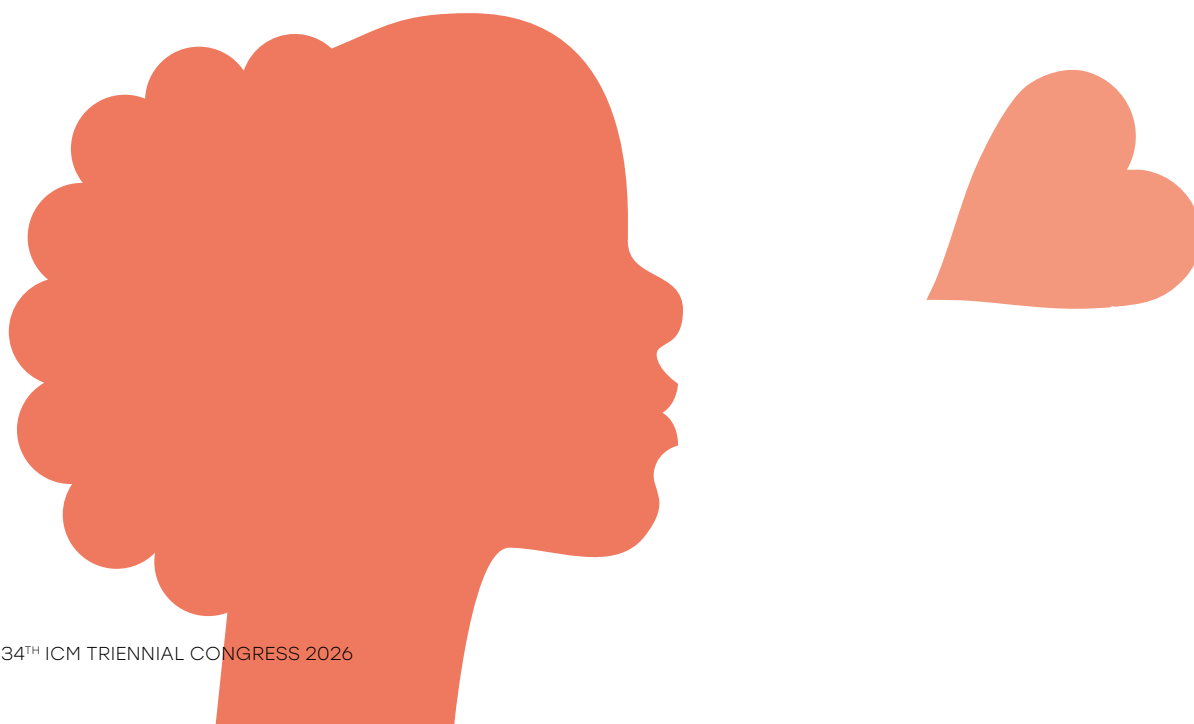
**SOLD OUT**

Prices are excluding VAT

**ICM partners may apply for a designated partner session within the concurrent sessions of the scientific programme. There are 12 sessions available and ICM will review all applications before confirming so as to ensure a spread between partners and topics. Partners may be limited in the number of sessions each can have.**

- Partner sessions will be listed in the congress programme and included in the concurrent sessions.
- Abstracts will be required as part of the selection process. Please see separate Call for Abstracts for guidance on preparing request. Selection of partner sessions will be completed by September 2025. Early contact with ICM would be appreciated.
- Included: room rental/standard audio-visual equipment; interpretation services for sessions in Plenary Hall.
- Partner sessions will be selected and managed by ICM Head Office.
- All partners must register for the Congress.
- Please contact ICM Congress Coordination Consultant: [s.pairman@internationalmidwives.org](mailto:s.pairman@internationalmidwives.org).

Place	Price	Limitation
Plenary Hall – up to 1,500 persons and including interpretation into French, Spanish & English	€ 15,000 per sessions	Maximum 4 sessions
TBD – up to 390 persons, no interpretation	€ 10,000 per session	Maximum 4 sessions
TBD – up to 150 persons, no interpretation	€ 7,000 per session	Maximum 4 sessions







# ICM Practice Village: NEW an opportunity for education

**Seize this unique opportunity to reserve your spot in the ICM Practice Village, where you can provide hands-on workshops using your company equipment. Midwives will have the chance to participate in a separate room and receive training on the equipment.**

- **Up to 3 parallel training rooms**
- **Maximum number of participants per room: 30**
- **Duration of each slot: minimum 30 minutes–maximum 90 minutes**

**Price: €1,500/30 min.**

Please reserve your slot as soon as possible.

	07:30–09:00	10:30–11:00	13:00–14:00	15:30–16:00	17:30–19:00
15.06.2026	x	x	x	x	x
16.06.2026	x	x	x	x	x
17.06.2026	x	x	x	x	x
18.06.2026	x	x	x	x	x

## ICM Practice Village includes:

- **Company listing on the ICM Congress website**
- **Company profile in the final programme and in the Congress app**
- **Room rental**
- **Basic furniture: banquet set-up. Round table + chairs**
- **Basic AV equipment: TV screen, laptop, HDMI connector (no sound)**

Time slots for the Practice Village take place primarily during coffee breaks and lunch periods, but also before and after the scientific program. The Company is responsible for providing the equipment and the necessary facilitators to deliver the training.

Participation is free for conference attendees.

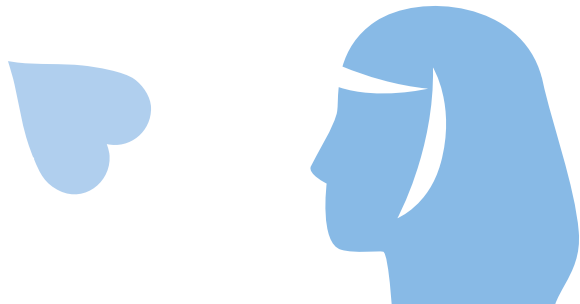
Please note that training facilitators must be registered for the conference.

If you wish to move forward, we kindly ask you to fill in the form online.

We require a description of the Practice station and its learning objectives.

**Deadline:** Wednesday 25 February 2026

Kindly note that this is an educational activity and **not a demonstration of commercial products.**





# Exhibition Opportunities

**The limited exhibit spaces offer an opportunity for your company to communicate with participants. Exhibition booths will be arranged to maximize delegate flow with close proximity to food and beverage service areas. All exhibitors will be listed in the programme and on the conference website.**

Space only	Cost (space only)
Single inline space only (3 × 3 m)	€4,500
Single corner space only (3 × 3 m)	€5,000
Double inline space only (3 × 6 m)	€8,000
Double corner space only (3 × 6 m)	€9,000

**Space only includes:**

- Exhibition space
- Access to the welcome reception
- 2 exhibitor only registrations per 9 sqm

Space + Shell scheme package	Cost
Single inline space + Shell scheme (3 × 3 m)	€5,400
Single corner space + Shell scheme (3 × 3 m)	€5,900
Double inline space + Shell scheme (3 × 6 m)	€9,200
Double corner space + Shell scheme (3 × 6 m)	€10,300

**Space + shell scheme package includes:**

- Set-up and dismantling
- Modular wall booth structure
- 1 company fascia board (name only, no logos) / 2 for double space
- Electricity
- 1 locable counter
- 1 garbage bin
- Carpet
- Access to the Welcome reception
- 2 exhibitor only registrations per 9 sqm

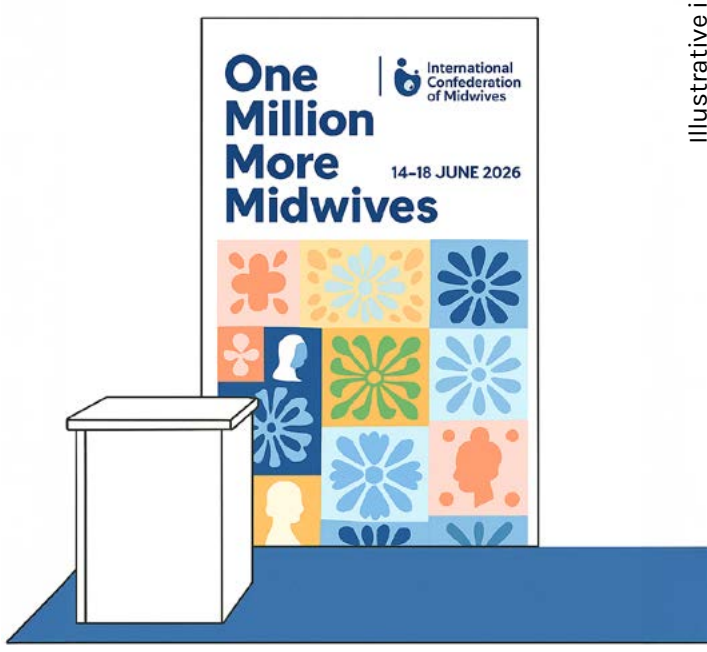
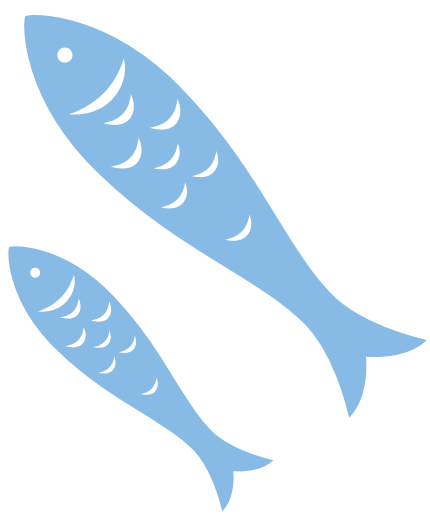


Space + Light box stand package (*)	Cost
Single Light box stand package (3 × 3 m)	€5,900

(\*) Larger light box stands  
can be accommodated on request.

**Space + Light box stand package includes:**

- Set-up and dismantling
- Light box stand with own graphic
- Electricity
- 1 lockable counter
- 1 garbage bin
- Carpet
- Locable counter with own graphic/logo
- Access to the Welcome reception
- 2 exhibitor only registrations per 9 sqm



Illustrative image



# Artisan's Village **NEW**

## Are you an artist or artisan interested in exhibiting at ICM 2026?

**We warmly invite you to showcase and sell your creations to congress attendees. Midwives are always delighted to purchase local souvenirs from their travels and are often on the lookout for meaningful mementos that remind them of where each ICM congress was held. They also particularly appreciate artwork connected to women, maternity, and motherhood—making the Artisan's Village an ideal place to share your craft with an audience that values it deeply.**

## Don't lose time— the number of spaces is limited.

**As an exhibitor in the Artisan's Village, you will receive:**

- One tabletop booth with one table and two chairs
- One exhibitor-only registration
- Your logo featured on the congress website

### Item Cost

**Tabletop €1,600 excl. VAT**



(illustrative picture)

